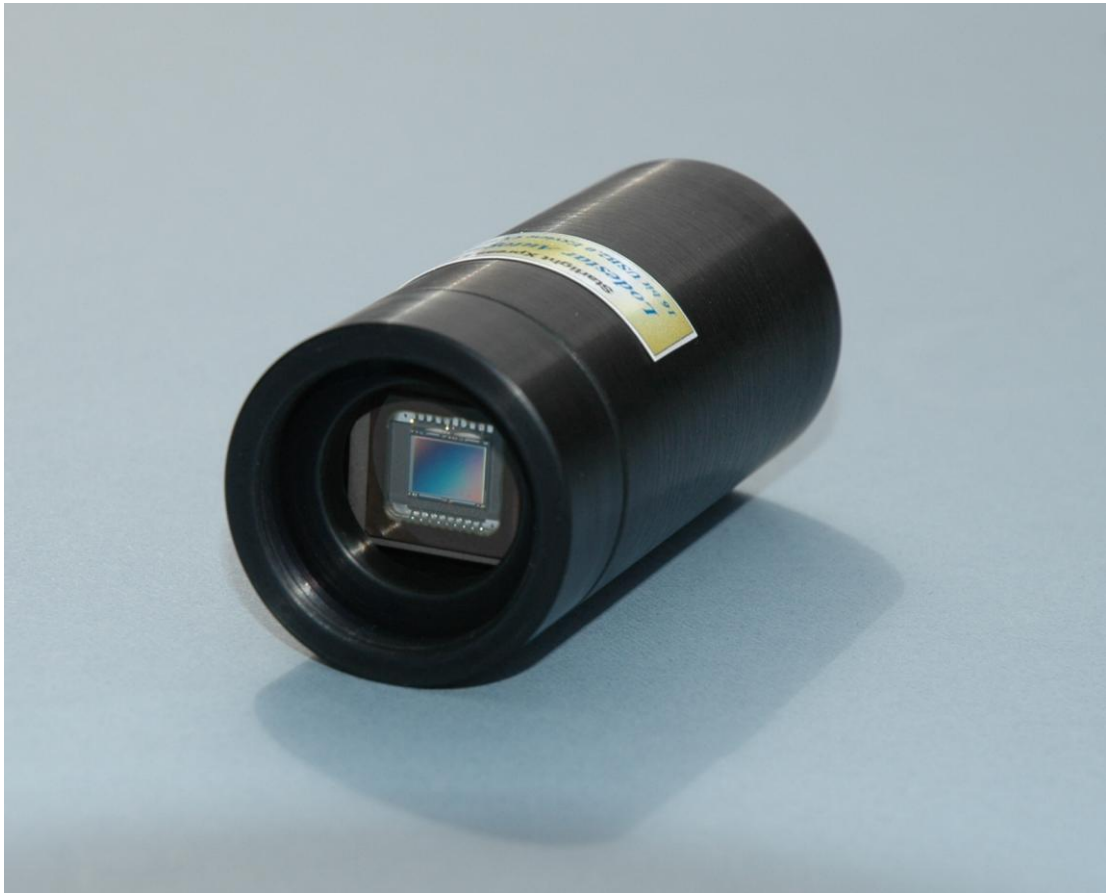


Handbook for the SX 'Lodestar' guide camera



Thank you for purchasing a Starlight Xpress 'Lodestar' guide camera. We hope that you will be very pleased with the performance of this product.

The Lodestar is a very compact guider which is powered and operated via a single USB2.0 computer connection. It also provides an opto-isolated output connection for direct control of most mounts, via their 'Autoguider' sockets. This output is compatible with the 'ST4' style of RJ12 connection and supplies 4 'pull down' direction lines and a common return. Alternatively, you may send the mount control signals via a serial connection from the guider control computer.

The Lodestar utilises a very sensitive Sony 'ExView' CCD (the ICX429AL) with an array of 752 x 580 pixels in a 'half-inch' format. Although the chip is not cooled, it has a very low dark signal and very little readout noise, so it can be used to guide on faint stars that are beyond the reach of webcams and CMOS chip based guide cameras.

The Lodestar specification:

CCD	-	Sony ICX429AL ExView monochrome CCD
Pixel count	-	752(H) x 580(V)
Pixel size	-	8.2 x 8.4uM
Barrel size	-	32mm dia. x 72mm long (1.25 inch eyepiece push fit size)
Barrel thread	-	25.4mm x 0.75mm 'CS' mount lens thread
Input connection	-	'Mini B' USB socket for USB2.0
Output connection	-	5 way JST 'ZH' style 1.5mm pitch plug to RJ12 autoguider plug
Output type	-	Opto-isolated 4 lines (N,S,E & W) pull down with common return line
Download rate	-	Approx. 10 frames per second in binned 2x2 mode (recommended)

Installing the Lodestar:

A new installation will require the driver files SXVIO.sys and Generic.sys, plus the SXVIO_Lodestar.inf file. If you run the 'Setup.exe' file on the supplied CD, it will install the drivers and operating software automatically. If you are installing manually, copy these files into a convenient folder on drive C and then connect the USB cable to the Lodestar. Point the installer at this folder when it asks for the location of the drivers and you should see it set up the hardware as a 'BlockIOClass' device in Device Manager.

The Lodestar control software is Lodestar.exe and the latest version may be downloaded from the Starlight Xpress web site (<http://www.starlight-xpress.co.uk>), if necessary. Copy the exe file and dlls into a folder on drive C and run the exe file to start the software. Alternatively, both 'AstroArt' and 'MaximDL' support the Lodestar and may be preferred.



Using the Lodestar:

The Lodestar is generally used with a separate guide telescope, or via an off-axis guider. It is designed to be inserted into a standard 1.25" focuser assembly, but also has a 25mm 'C' type camera lens thread in the front to allow standard CCTV lenses to be attached. Please note that the chip to lens distance is only 12.5mm and so a 'CS' to 'C' extension will be needed to permit a standard C lens to reach focus. Lenses designed for 'CS' mount cameras will focus without an extension tube, but many of these

lenses cannot fully illuminate a half-inch format CCD, so take care when selecting a lens for this purpose.

A typical set up might consist of an inexpensive 80mm F5 refractor 'piggybacked' onto an SCT, with the Lodestar fitted directly into its focus barrel. Many such telescopes are designed to be used with an inverting prism ahead of the eyepiece and so the focuser may be too short when the Lodestar is inserted directly. In this case, an extension tube may often be made from a cheap Barlow lens assembly with the lens removed. This configuration can be seen in the picture below.



The Lodestar attached to an 80mm F5 guide 'scope

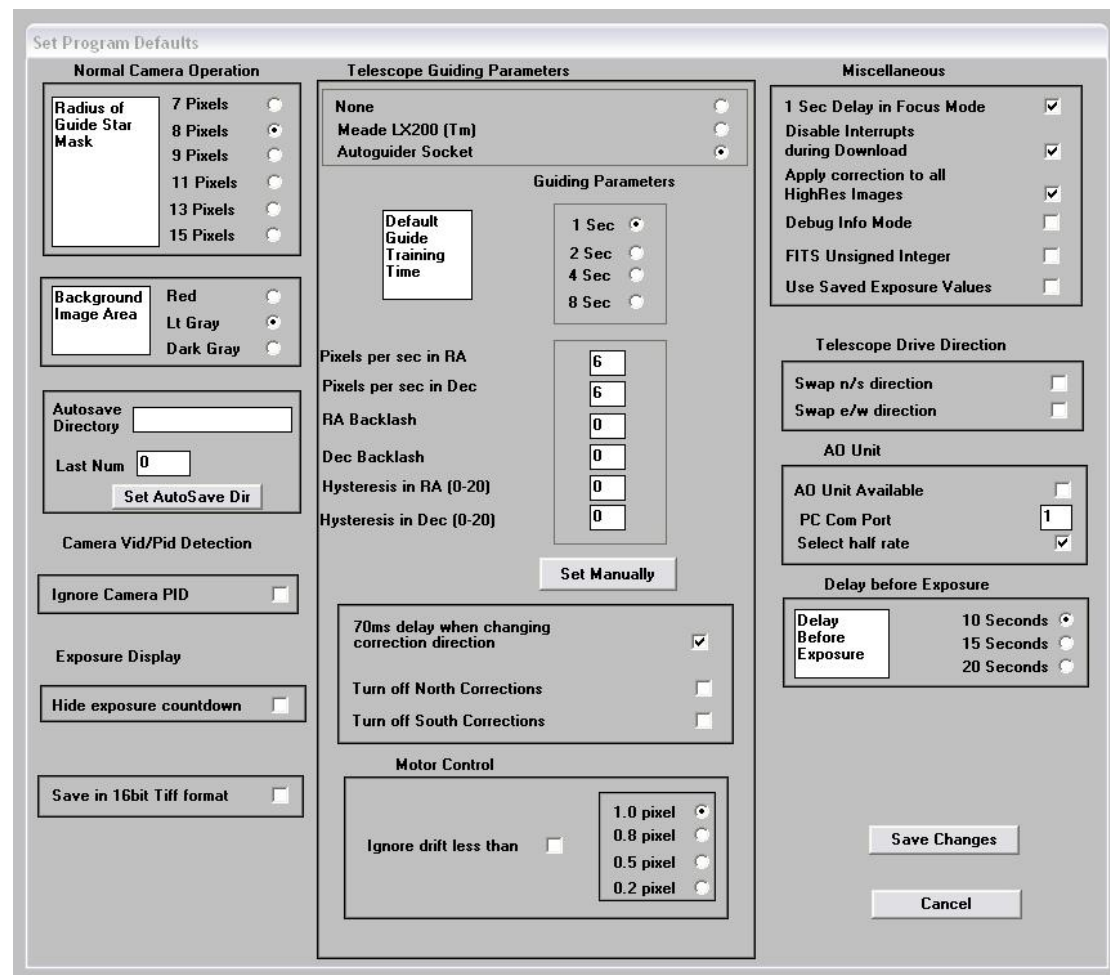
The focal length of your guide telescope is not especially critical for good guiding, as the guiding software searches for the 'centroid' of the guide star image and can resolve shifts of far less than 1 pixel. Using a guide scope with a relatively short focal length (between 300 and 500mm) makes guide star finding very easy and this is a recommended setup for general purpose guiding.

The control of your telescope mount will depend on what inputs are provided. The Lodestar output connector supplies 4 pull-down lines and a common return line to simulate an 'ST4' style autoguider output. The lines are isolated from the Lodestar electronics by opto-isolator chips and so there is no risk of damage when connecting the outputs to mounts with unprotected electronics. A standard 'RJ12' style output lead is supplied with the Lodestar and this may be connected to any ST4 compatible autoguider input socket on the mount. It is also possible to guide by using serial data from the computer to an RS232 input on the mount, but this will be covered later and is less effective than the direct hardware connection.

The preferred guiding mode is 2x2 binned, as this gives both fast downloads and high sensitivity without any 'interlacing' issues. The 'Fast' 2x1 mode is also useful if you are working with a short focal length guide 'scope, as it offers somewhat finer RA guiding resolution in the X axis if this is oriented East-West.

Guiding with the Starlight Xpress software

With the Lodestar connected to the PC and mount, open 'Lodestar.exe' and find the 'Set program defaults' menu under the 'File' heading. If this is the first run of the software, you will get a warning about the 'ini file not found', but ignore this and click on OK. You should now see a screen similar to the one shown below:

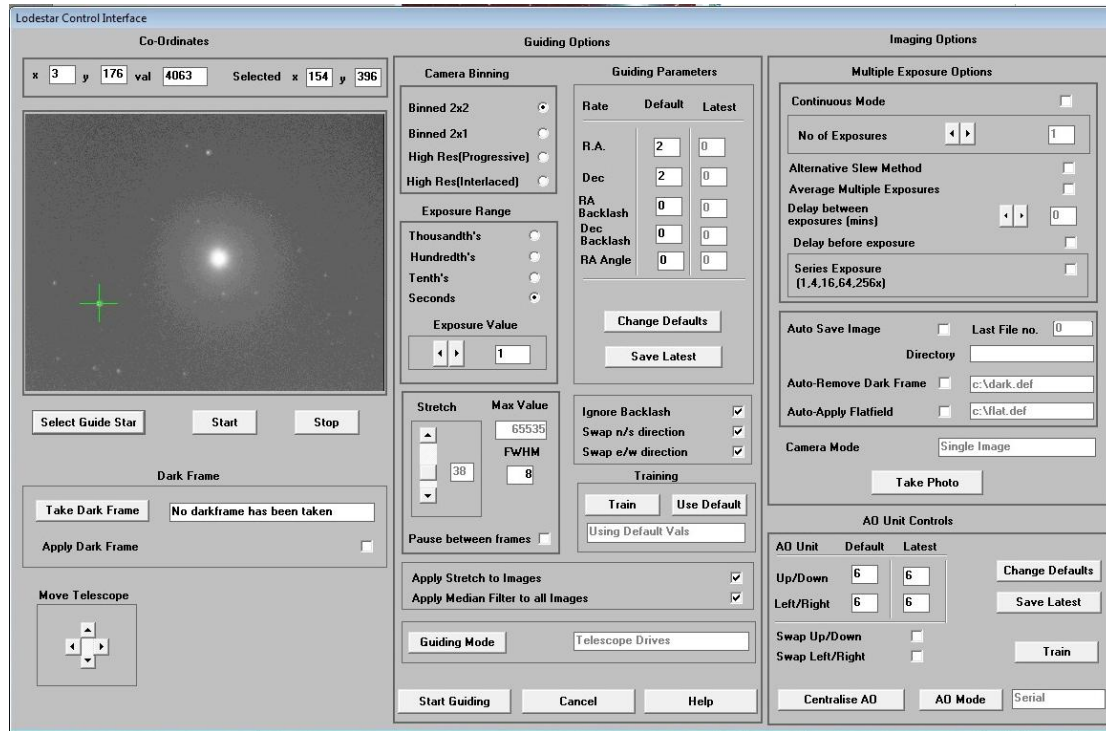


The settings shown above are generally satisfactory as a starting point, although some will probably need refinement for best results. In the example shown, the 'autoguider socket' on the Lodestar is providing the control signals to the mount, but you might alternatively use the 'LX200' mode via the serial port of the computer, if this is preferred. The Guiding Parameters are set to 6 pixels per second, which corresponds to the typical drift rate of a 1000mm focal length guide telescope when the mount is guiding at 0.5x sidereal speed. Longer focal lengths and/or higher guiding rates will require a larger

value to be set so as to avoid excessively fast corrections, which can cause erratic guiding or even oscillation of the guiding errors to either side of the guide star.

Once the defaults have been set to values which you think will be approximately correct, save the settings and open the 'View' menu. In this you will see an option called 'Max palette stretch'. Open this and check the 'Activate stretch display' check box. This will automatically boost the image brightness so that faint guide stars can be easily seen – if necessary, you can adjust the slider for the best results.

Now click on the camera icon to open the Lodestar control dialog, as below:

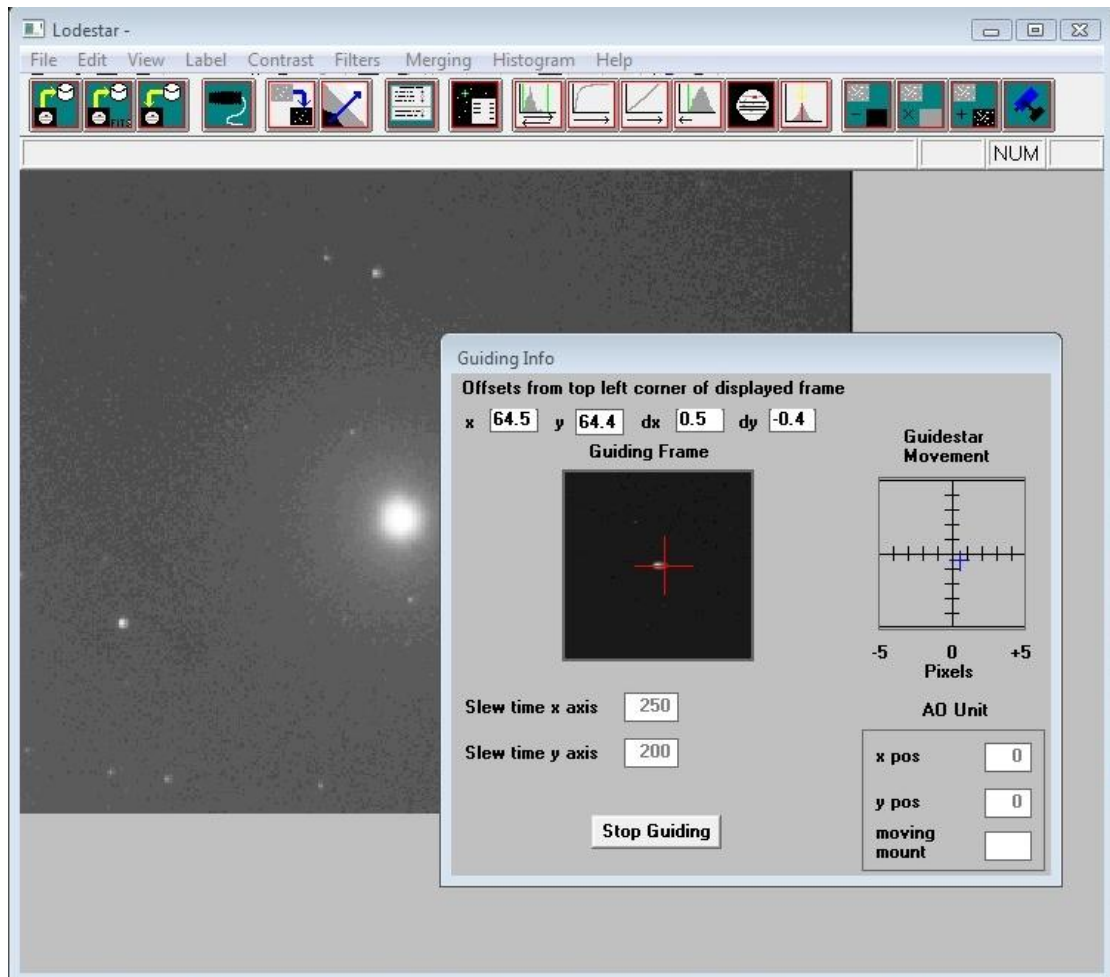


The image box will be empty at this point, but we need a frame to select the guide star from, so use the guiding options to select a suitable exposure time (say 1 second) and press the 'Start' button below the image box. A sequence of images will be shown and you can refine the image focus and centring as required. Before attempting to guide, it is wise to check that you have control of the telescope drive via the Lodestar software. This is easily done by pressing the 'Move Telescope' buttons at the lower left of the control box. Check that pressing the arrow buttons causes the star field to drift left, right, up and down, as appropriate. The LED at the back of the Lodestar should change colour when the buttons are pressed. If all is well, move onto the next step below:

Once a good guide star has been found, press the 'Stop' button and then the 'Select guide star' button. You can now click the mouse arrow on the guide star and a green cross will appear, centred on the star (see above). Don't select a very bright guide star, as this will result in poor guiding due to saturation of the core pixels in the star image. The example above shows the region around Vega and it is clear that Vega itself would make a very poor guide star due to its large saturated core.

Once the guide star is selected, a small box appears with the star coordinates. If they look good, just click on OK.

Now click on 'Start Guiding':



After a brief delay, the Guiding Info window will open, as above, and you will see the guide star, along with error values and a reticule showing the guide star location with respect to the reference position. If all is well, you should see the guide star location being forced towards the centre position with each successive guide image. However, it is quite likely that it will be pushed away from the correct position, due to an error in the guiding default settings. If this is the case, note the direction of travel, and then reverse the appropriate direction setting in the guiding defaults menu. For example, if the star moves away to the left or right, try reversing the 'Swap e/w direction' setting. If guiding works, but is sluggish, try reducing the 'Rate' setting in the guider settings, or increase it if the guiding oscillates from one side of the guide star to the other.

Lodestar maintenance

The Lodestar head is designed for a long and reliable lifespan and needs very little maintenance to keep it in good working order. The only common issue is with dust particles which collect on the CCD window and can shade areas of the image field. These are best removed with a quick blast of compressed air from a 'Dust off' aerosol, or similar air blower. More permanent marks may be removed with a drop of alcohol on a 'microfibre' lens cloth.

Dear User,

Thank you for purchasing a Starlight Xpress CCD Imaging System. We are confident that you will gain much satisfaction from this equipment, but please read carefully the accompanying instruction manual to ensure that you achieve the best performance that is capable of providing.

As with most sophisticated equipment a certain amount of routine maintenance is necessary to keep the equipment operating at its optimum performance. The maintenance has been kept to a minimum, and is fully described in the manual.

In the unfortunate instance when the equipment does not perform as expected, may we recommend that you first study the fault finding information supplied. If this does not remedy the problem, then contact Starlight Xpress for further advice. Our message board service on the Starlight Xpress web site will often provide solutions to any problems.

The equipment is covered by a 12-month guarantee covering faulty design, material or workmanship in addition to any statutory Consumer Rights of Purchasers.

CONDITIONS OF GUARANTEE

- 1) The equipment shall only be used for normal purposes described in the standard operating instructions, and within the relevant safety standards of the country where the equipment is used.
- 2) Repairs under guarantee will be free of charge providing proof of purchase is produced, and that the equipment is returned to the Service Agent at the Purchaser's expense and risk, and that the equipment proves to be defective.
- 3) The guarantee shall not apply to equipment damaged by fire, accident, wear and tear, misuse, unauthorised repairs, or modified in any way whatsoever, or damage suffered in transit to or from the Purchaser.
- 4) The Purchaser's sole and exclusive rights under this guarantee is for repair, or at our discretion the replacement of the equipment or any part thereof, and no remedy to consequential loss or damage whatsoever.
- 5) This guarantee shall not apply to components that have a naturally limited life.
- 6) Starlight Xpress's decision in all matters is final, and any faulty component which has been replaced will become the property of Starlight Xpress Ltd.

For further information or advice, please call:

Starlight Xpress Ltd.,

The Office, Foxley Green Farm,

Ascot Road, Holyport,

Berkshire,

England. SL6 3LA

Tel: 01628 777126

Fax: 01628 580411

e-mail: michael.hathey@starlight-xpress.co.uk

Web site: <http://www.starlight-xpress.co.uk>